



EQUIPMENT

7T MRI

- Structural and functional imaging
- 30cm bore

PET/CT and SPECT/CT

- Metabolic activity and biodistribution
- Up to ~500µm resolution (SPECT)

OPTICAL IMAGING

- Bioluminescence and fluorescence imaging
- Planar X-rays

AUTORADIOGRAPHY

- High resolution (~10µm)
- Suited for low-energy radioisotopes (^3H , ^{14}C)

ADDITIONAL EQUIPMENT

- Workstations and processing software
- Image analysis support
- Sleep and gait assessment systems
- Dedicated housing rooms
- Surgical suite
- IHC slide scanning

SAIL 
SMALL ANIMAL
IMAGING LABS

INQUIRIES

Contact us to find out
how our services can
accelerate your research!

Small Animal Imaging Labs
Research Institute of the
McGill University Health Centre

ES2.1602 - 1001 boul. Décarie
Montréal, H4A 3J1
514-934-1934, ext. 76266
sail.rimuhc@mcgill.ca

rimuhc.ca/small-animal-imaging-labs

We look forward to
working with you!

Centre universitaire
de santé McGill
Institut de recherche



McGill University
Health Centre
Research Institute



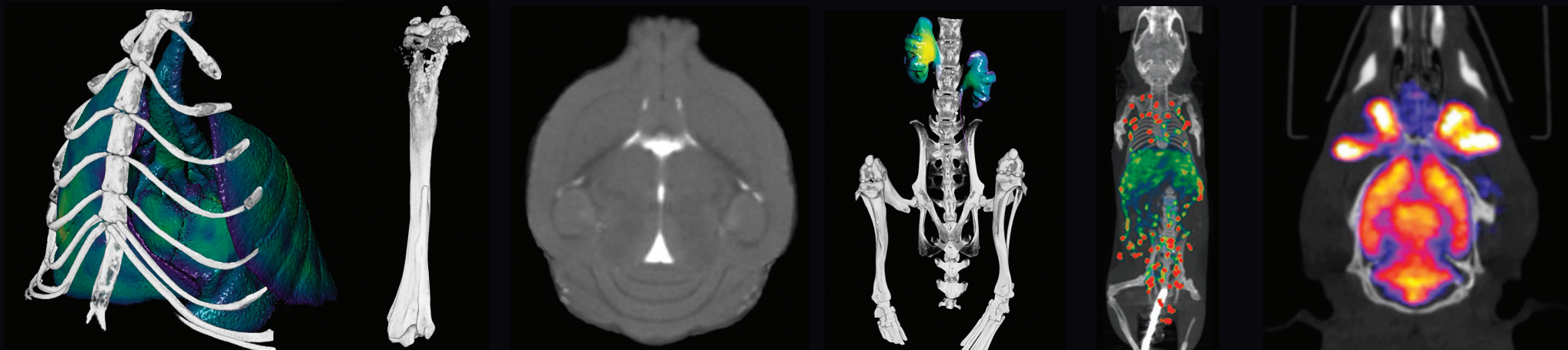
**IN VIVO
IMAGING
SERVICES**

SAIL 
SMALL ANIMAL
IMAGING LABS

Centre universitaire
de santé McGill
Institut de recherche



McGill University
Health Centre
Research Institute



APPLICATIONS

Our equipment enables research on a wide range of applications such as:

BRAIN IMAGING

Anatomy, cortical thickness, micro-structure, angiography, cerebral tumours, neurodegeneration, stroke, brain activity

ONCOLOGY

Tumour volume, glucose uptake, metabolic state, metastasis detection, therapy assessment, tumour perfusion

STRUCTURAL IMAGING

Bone anatomy, lung and airways, musculoskeletal system, kidney, ureter, bladder, orthopedic implants, heart imaging

DRUG BIODISTRIBUTION

Pharmacokinetic modeling, radiolabeling of custom compounds, Available radioisotopes: ^{18}F , ^{11}C , ^{64}Cu , ^{89}Zr , $^{99\text{m}}\text{Tc}$, ^{111}In , ^{177}Lu , ^{123}I , ^{125}I , ^{131}I

IMAGING SERVICES

The SAIL Platform is a **world-class** in vivo imaging facility designed to support the research activities of biomedical investigators.

Our **state-of-the-art equipment** and **scientific expertise** facilitate the translational research studies of our industrial and academic clients.

SAIL provides a comprehensive suite of imaging equipment and services. We have expertise in planning, designing and executing in vivo imaging studies, image analysis and training.



MORE SERVICES

In addition to our imaging systems, our platform enables behavioural assessment of gait and sleep.

GAIT ASSESSMENT

Unforced locomotion, 50+ gait metrics on mice and rats, wide range of applications

SLEEP ANALYSIS

Non-invasive, very easy-to-use, precise and accurate, standard cage environment

VETERINARY SERVICES

Injections, blood and bone marrow collection, perfusion

