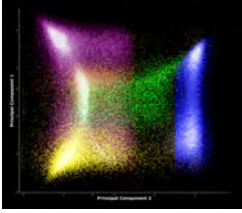




The FCS Express Difference Moving Beyond FlowJo

hosted by
Immunophenotyping Platform, Research Institute of the MUHC



Friday May 12th
1:30 - 3:00 PM
Room: EM1.3509

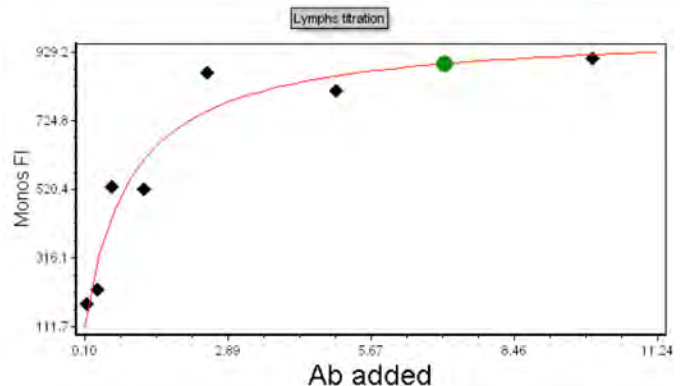
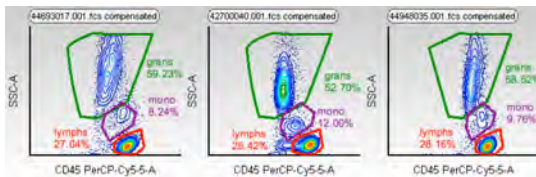
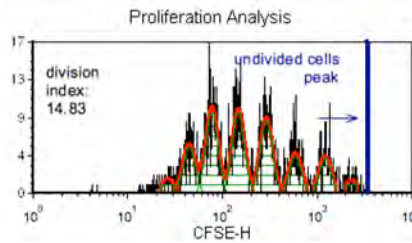
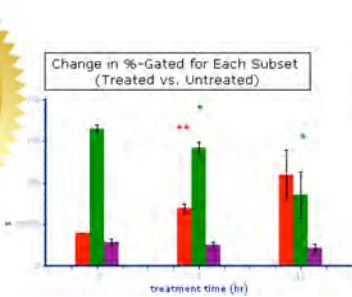


The De Novo Software approach to flow cytometry data analysis allows for advanced analysis and reporting with an easy-to-use, efficient interface. Flexible licensing options exist to allow you to use the software from any computer, so you can analyze when and where you need to.

Join us for this seminar and Q&A to get an informative look at FCS Express.

Data Analysis with FCS Express 6

Mac- and PC-compatible	Export directly to PowerPoint, Excel, and PDF
Easy Compensation	Optimized for Speed and Large Data
Import FACS Diva Files	Cell Cycle and Proliferation
Publication-quality figures	Batch processing
Read Amnis data and images	tSNE/vSNE, Cluster Analysis
Bar, Pie, and Regression Plots	Dedicated Support and Resources



Cell #	Bright Detail Inten	Bright Detail Inten	Area_Threshold(%)	Ch01 Brightfield	Ch02 Cas3	Ch07 AnxV FB	Ch07 AnxV PB/GP
1	18123.00	2061.00	22.75				
2	17813.00	4586.00	46.25				



RSVP recommended, to
immunophenotyping.rimuhc@mcgill.ca

VMax/Plateau	994.48
90% of VMax/Plateau	895.03
Amount of AB to use	7.11 uL